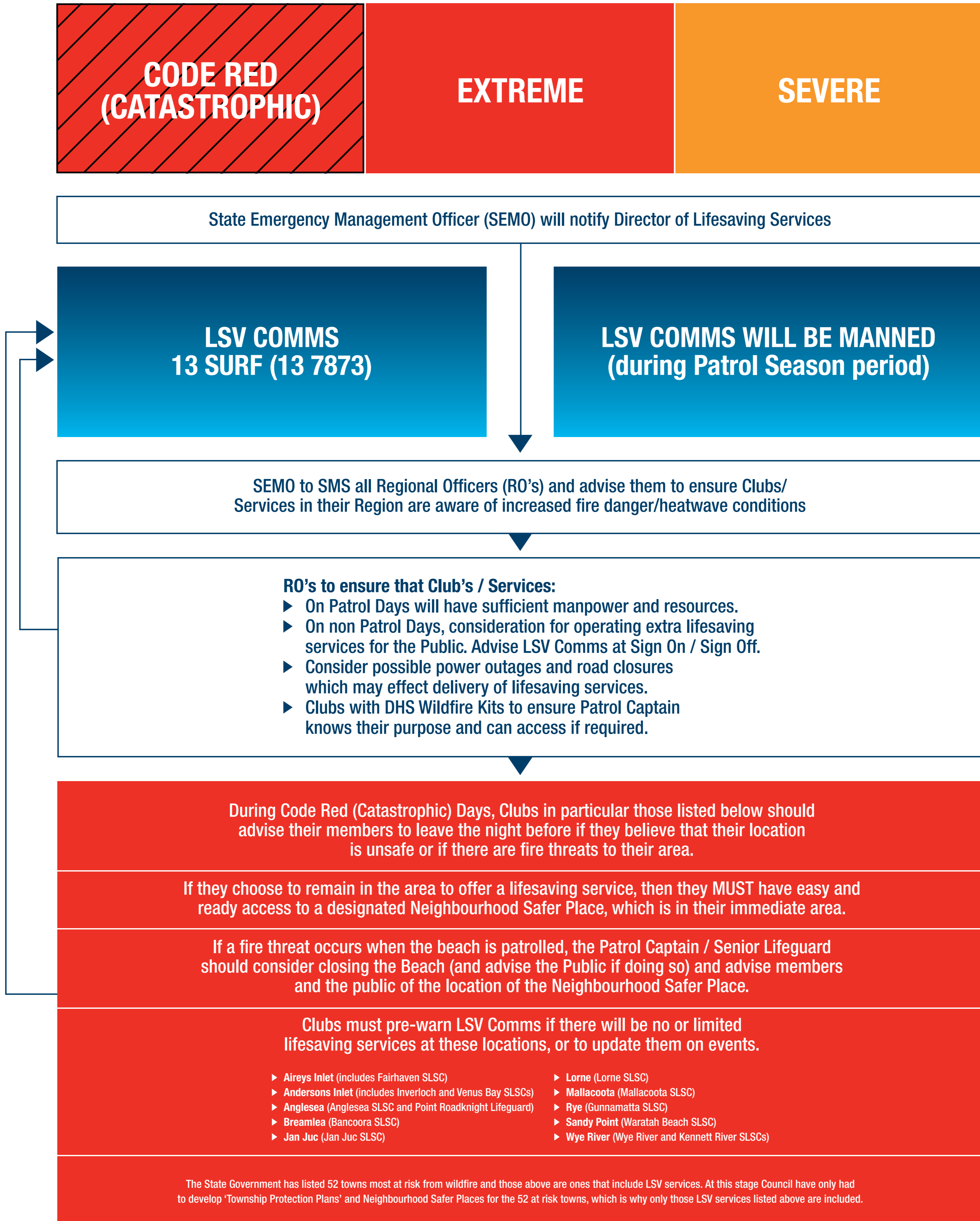




Wildfire/Heatwave Response

13 SURF (13 7873)

WHEN ONE OF THESE FIRE DANGER RATING DAYS IS ANNOUNCED IN A LSV REGION(S) DURING THE FIRE SEASON.



LSV REGION	BOM FORECAST DISTRICT	FIRE DANGER
Bass	Central (West & South Gippsland from Inverloch eastwards)	Every day during the fire season the Bureau of Meteorology (BOM) forecasts an outlook of the Fire Danger Index (FDI) by considering the predicted weather including: temperature, relative humidity, wind speed and dryness of vegetation. The Fire Danger Rating for each weather district is determined by the BOM in consultation with the fire agencies. Each of the Fire Danger Ratings has recommended actions you should follow.
Bellarine	Central	
Gippsland	West & South Gippsland (East Gippsland Lakes Entrance eastwards)	
Kingston	Central	
Peninsula	Central	
Port Phillip	Central	
Surfcoast	Western	
Western	Western	