

Circular 134:01:17



To: Club Presidents
Club Team Coaches
Officials
Club Secretaries
Club Team Managers

Cc: Aquatic Sports Executive
Aquatic Sports Council

From: Luke Gavin – Aquatic Sports Coordinator

Date: 4 January 2017

Subject: **Swim-Board-Ski Carnival – Barwon Heads/13th Beach SLSC**

Action: Entries close 11:00pm on Sunday, 8 January 2017

For additional details on this Circular please contact:
Aquatic Sports Department on 03 9676 6957 or email sport@lsv.com.au
Circulars are available at www.lsv.com.au/circulars

**2016/17 Swim-Board-Ski Carnival
BARWON HEADS/13TH BEACH SLSC
Saturday, 14 January 2017**

Entering Competitors

Entries for this event will be through the LSV online entry system. Team Managers must enter each team member through the online process. <http://sportlsv.carnival.sls.com.au/eventmgr/sport>

Please remember to force a SurfGuard update before entering competitors.

Program

The Program for this event can be downloaded from the Life Saving Victoria website at:
<http://lsv.com.au/clubs-members/sports/20162017-events-calendar/>

Senior Team Managers Handbook

The Senior Team Managers and official's handbook can be found on the LSV website under Sport / Resources.
<http://lsv.com.au/clubs-members/sports/general/>

Weather/Conditions

In the event of adverse weather conditions, the carnival may be cancelled or relocated. A decision to cancel will be made as far out from the carnival as possible - whereby all registered competitors will be notified via email and/or sms.

To make sure that you receive the latest up-to-date information, please make sure that your correct email address and mobile phone number is registered in your [members portal](#) account

Additionally, if conditions change unexpectedly all team managers/parents are advised to check Life Saving Victoria's Facebook and Twitter pages. www.facebook.com/lifesavingvic and www.twitter.com/lsvsport

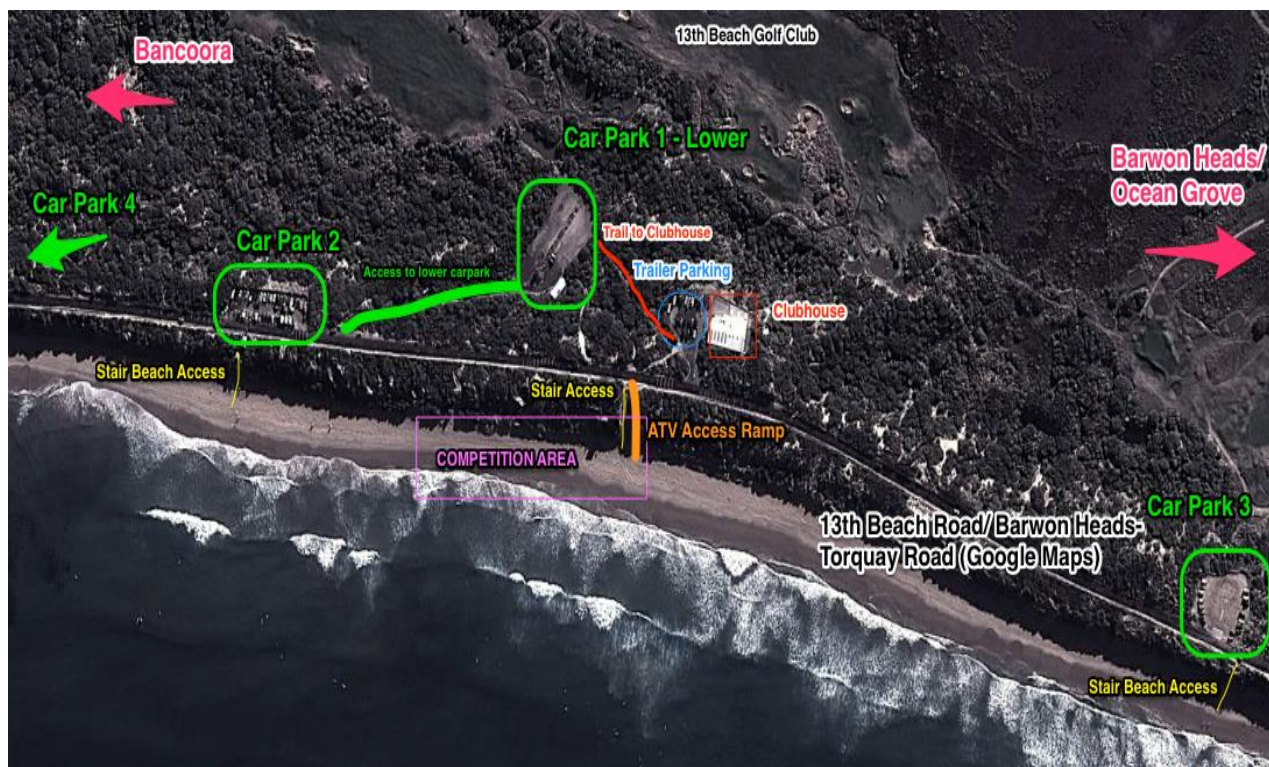
We also recommend that that team managers, competitors and officials also check the following websites for current information:

Updates regarding bushfires and road closures - <http://emergency.vic.gov.au/>
Weather and surf condition updates - <http://www.bom.gov.au/australia/meteye/>
VicEmergency App - <https://www.emv.vic.gov.au/responsibilities/victorias-warning-system/vicemergency-app>



Parking and Club Trailers

Please note that only club trailers are allowed to be parked in the car park next to the clubhouse. All vehicles must be parked in either of the 2 car parks east of the clubhouse.



- Car Parks 1 and 2 have best access and relatively close to the competition area
- Car Parks 3 and 4 can only access the competition area via stairs to the beach with a short walk
- The vehicle ramp to the beach must not be used by pedestrians – stairs only!
- No one is to enter or view the competition from the sand dunes!

Officials and Water Safety

Please remember clubs MUST enter Officials as per the ratio and rosters outlined in the 2016/17 Team Manager's & Official's Handbook. Clubs must also take note of when they are scheduled for Powercraft Shifts and Set-Up/Pack-Up duties.

Officials should have a minimum qualification of Junior Official, Officials, Powercraft and Set-Up/Pack-Up personnel must be entered into specific roles [here](#) by the close of entries.

Powercraft Roster

Carnival	6.30am-8.00am	8.00am-12.00pm
Fairhaven	13 th Beach	13 th Beach
		13 th Beach

Set-Up/Pack-Up Roster

Set Up	Anglesea	Pack Up	Torquay
	Ocean Grove		Mt Martha

Each allocation must provide 2 members to help with the setting up or packing up of carnival equipment. Set up and Pack up personal are required to sign in with LSV admin (6.30am for Set-Up, when called or at the end of competition for pack-up).



Working With Children Cards

In line with Life Saving Victoria's Member Protection Policy 6.5, all members over 18 years MUST have a working with Children Check. For more information, please [click here](#).

Photography

Daily photography passes can be picked up at the LSV admin tent on presentation of a valid Working with Children Check Card. Alternatively, if you would like to register for an annual LSV photography card please register at: <https://lifesavingvictoria.wufoo.com/forms/lsv-photography-pass-registration/>

Sun Protection

All clubs are responsible for Sun Protection for their competitors and officials. Please refer to LSV Sun Safety [Policy 2.1](#)

ENTRIES CLOSE: 11:00pm on Sunday, 8 January 2017

