

TRAINING ROOM - AV

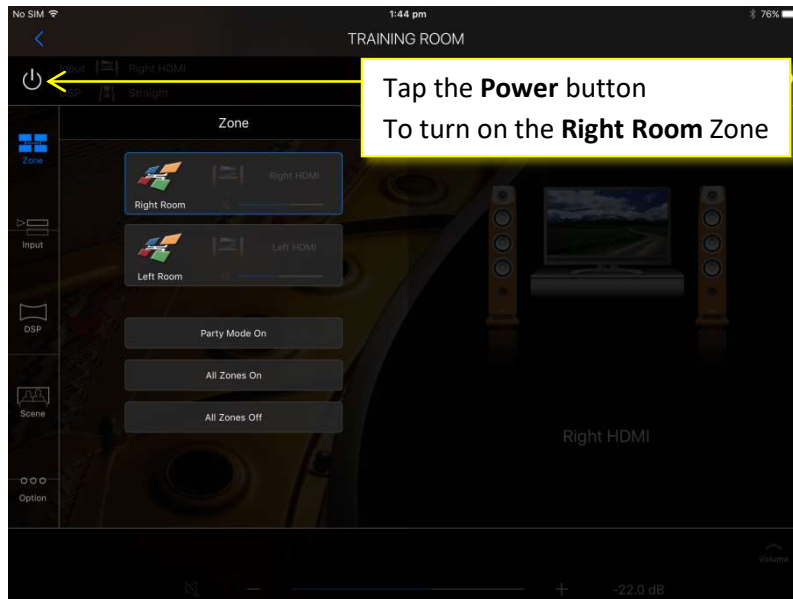
- 1) Turn on the TVs you require using the Soniq Remote Control



- 2) Connect the HDMI cable to your laptop and the Right HDMI wall plate

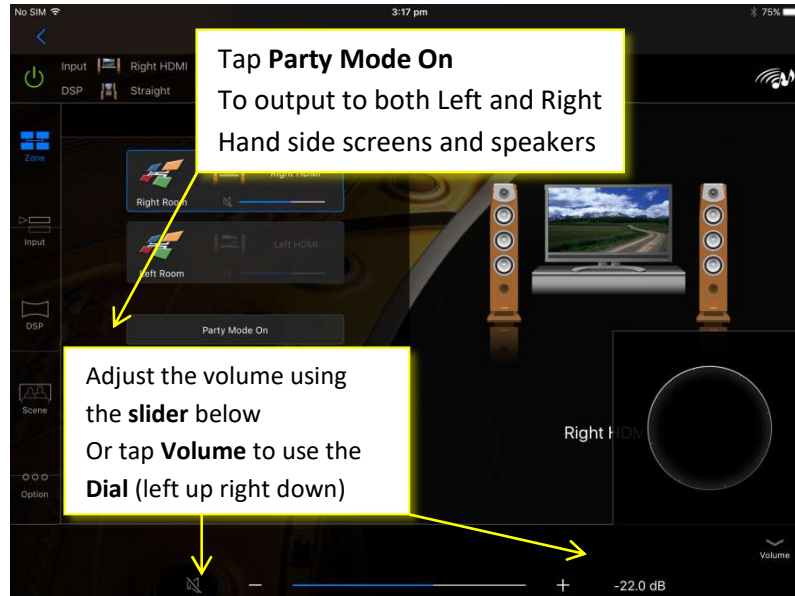


- 3) Turn on the iPad (stored in the small right hand storage room)

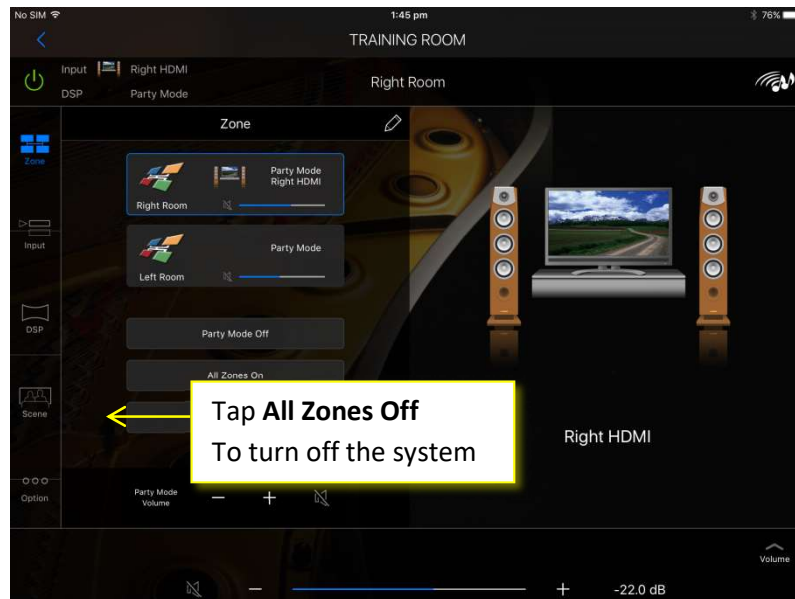


The Right Hand Side screens will display your laptop screen and audio will come out of the Right Hand Side speakers

4) Using both sides of the Room



5) To turn off the system



6) Turn off the TVs using the Soniq remote